

OEMIC FITTINGS

Stainless steel Forged Fitting

150 Lb *SIZE* : 1/8"~4"(304/316)



ELBOW 90° BANDED



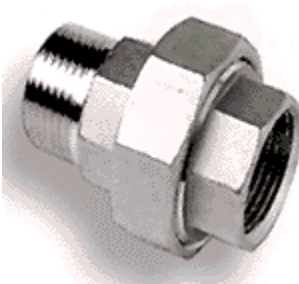
ELBOW 45° BANDED



STREET ELBOW 90° M/F



UNION CONICAL JOINT
F/F



UNION CONICAL JOINT
M/F



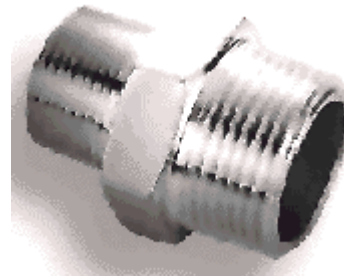
TEE BANDED



CROSS BANDED



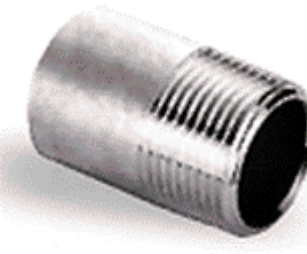
HEXAGON NIPPLE



HEXAGON NIPPLE
REDUCING



BARREL NIPPLE (PPE)

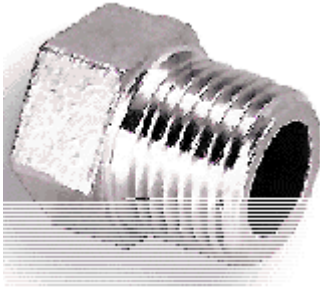


WELDING NIPPLE (PPE)

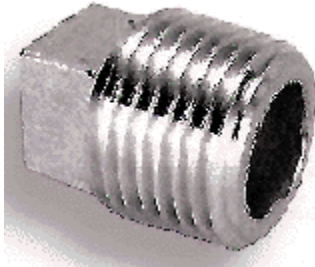


HEXAGON WELDING

NIPPLE



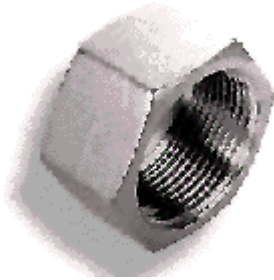
HEXAGON PLUG



SQUARE PLUG



HEXAGON BUSHING M/F



HEXAGON CAP



ROUND CAP BANDED



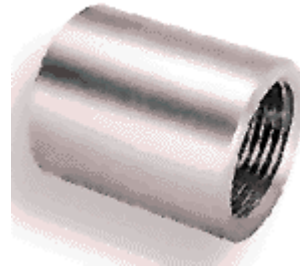
BACKNUT (LOCKNUT)



SOCKET BANDED



**SOCKET BANDED
REDUCING**



SOCKET O/D MACHINE

Order/Fax: (403)277-6790 (Canada), (630)578-0598 (USA) Email: Order@Valvedepot.com

Elbow, Tee, Cap.

Dimension : ANSIB16.9, B16.25, B16.28, MSS SP-43, SP-48, SP-59

Material Spec : ASTM A403, A240, A312, A234.

Material Grades : 304, 304L, 316, 316L, CARBON STEEL.



**90° LONG RADIUS
ELBOWS**



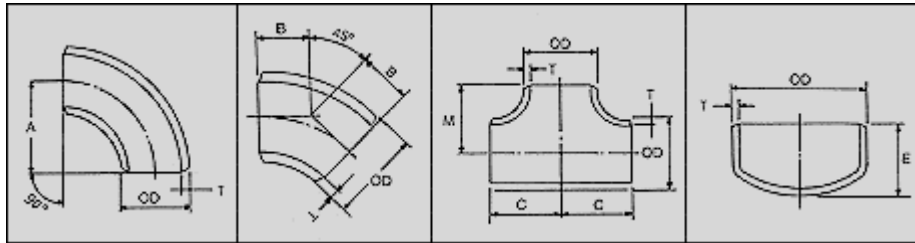
**45° LONG RADIUS
ELBOWS**



STRAIGHT TEES



CAPS



Dimensions for Elbow, Tee, Cap.

Unit : inch

Nominal Pipe Size	Outside Dia. (OD)	Wall Thickness (T)				90° L/R Elbow Center To End A	45° L/R Elbow Center To End B	90° S/R Elbow Center To End A	Tees Center To Ends C M	Cap Length E
		Sch.5S	Sch.10S	Sch.40S	Sch.80S					
1/2	0.840	0.065	0.083	0.109	0.147	1.50	0.625	-	1.00	1.00
3/4	1.050	0.065	0.083	0.113	0.154	1.12	0.438	-	1.13	1.00
1	1.315	0.065	0.109	0.133	0.179	1.50	0.875	1.00	1.50	1.50
1-1/4	1.660	0.065	0.109	0.140	0.191	1.88	1.00	1.25	1.88	1.50
1-1/2	1.900	0.065	0.109	0.145	0.200	2.25	1.12	1.50	2.25	1.50
2	2.375	0.065	0.109	0.154	0.218	3.00	1.38	2.00	2.50	1.50
2-1/2	2.875	0.083	0.120	0.203	0.276	3.75	1.75	2.50	3.00	2.00
3	3.500	0.083	0.120	0.216	0.300	4.50	2.00	3.00	3.38	2.50
4	4.500	0.083	0.120	0.237	0.337	6.00	2.50	4.00	4.13	3.00
5	5.563	0.109	0.134	0.258	0.375	7.50	3.12	5.00	4.88	3.50
6	6.625	0.109	0.134	0.280	0.432	9.00	3.75	6.00	5.63	4.00
8	8.625	0.109	0.148	0.322	0.500	12.00	5.00	8.00	7.00	5.00
10	10.750	0.134	0.165	0.375	0.500	15.00	6.25	10.00	8.50	6.00
12	12.750	0.156	0.180	0.375	0.500	18.00	7.50	12.00	10.00	7.00
14	14.000	0.156	0.250	0.375	0.500	21.00	8.75	14.00	11.00	7.50
16	16.000	0.165	0.250	0.375	0.500	24.00	10.00	16.00	12.00	8.00
18	18.000	0.165	0.250	0.375	0.500	27.00	11.25	18.00	13.50	9.00
20	20.000	0.188	0.250	0.375	0.500	30.00	12.50	20.00	15.00	10.00
24	24.000	0.218	0.250	0.375	0.500	36.00	13.50	24.00	17.00	12.00

Order Fax: (403)277-6790 (Canada), (630)578-0598 (USA) Email: Order@valvedepot.com