

# OMIC Flanges ANS I M S S / J I S / D I N B S

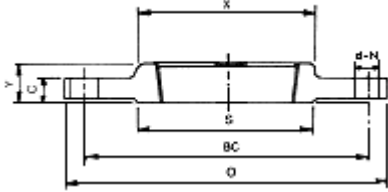
## ANSI 150LB

\*U.S. STANDARD \*DIMENSION CONFORM TO ANSIB16.5

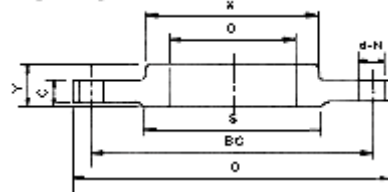
THREADS CONFORM TO ANSIB2.1 NPT BSPT & DN 2999 THREAD.

MATERIAL ARE IN ACCORDANCE WITH ASTM A182 Gr. F304, F304L, F316, F316L, ASTM A105 CARBON STEEL

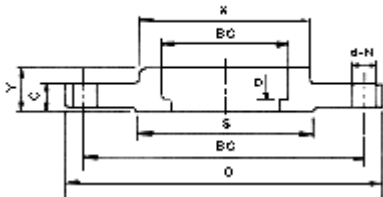
**THREADED**



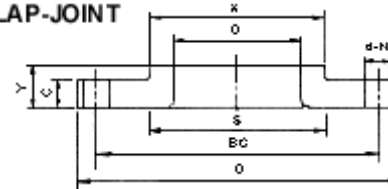
**SLIP-ON**



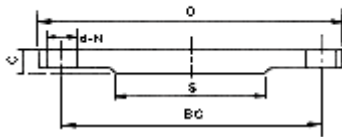
**SOCKET-WELDING**



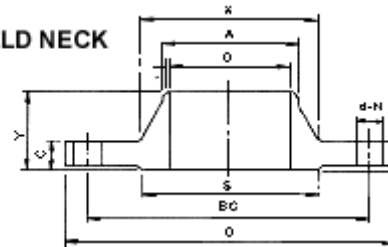
**LAP-JOINT**



**BLIND**



**WELD NECK**



**UNIT : INCH**

Size	O	S	X	A	B			Y		C	BC	d	N	D	r
					Socket Welding Slip-On Welding	Lap Joint	Welding Neck	Welding Neck	(Except) Welding Neck						
1/2	3.50	1.38	1.19	0.84	0.89	0.92	0.62	1.87	0.63	0.45	2.38	0.62	4	0.39	0.12
3/4	3.86	1.69	1.50	1.05	1.11	1.13	0.82	2.06	0.63	0.51	2.75	0.62	4	0.43	0.12
1	4.25	2.00	1.94	1.32	1.38	1.39	1.05	2.19	0.67	0.57	3.12	0.62	4	0.51	0.12
1-1/4	4.61	2.50	2.31	1.66	1.72	1.74	1.38	2.25	0.83	0.63	3.50	0.62	4	0.55	0.20
1-1/2	5.00	2.87	2.56	1.90	1.97	1.98	1.61	2.44	0.87	0.69	3.87	0.62	4	0.63	0.24
2	5.98	3.63	3.06	2.38	2.46	2.48	2.07	2.50	0.98	0.77	4.75	0.75	4	0.67	0.31
2-1/2	7.01	4.13	3.56	2.87	2.96	2.98	2.47	2.75	1.14	0.89	5.50	0.75	4	0.75	0.31
3	7.50	5.00	4.25	3.50	3.59	3.61	3.07	2.75	1.18	0.94	6.00	0.75	4	0.83	0.39
3-1/2	8.50	5.50	4.81	4.00	4.08	4.11	3.55	2.81	1.26	0.94	7.00	0.75	8	0.87	0.39
4	9.02	6.19	5.31	4.50	4.59	4.61	4.03	3.00	1.30	0.94	7.50	0.75	8	0.94	0.43
5	10.00	7.31	6.44	5.56	5.68	5.70	5.05	3.50	1.42	0.94	8.50	0.89	8	0.98	0.43
6	10.98	8.50	7.56	6.63	6.74	6.76	6.07	3.50	1.57	1.00	9.50	0.87	8	1.06	0.51
8	13.50	10.63	9.69	8.63	8.74	8.76	7.98	4.00	1.73	1.14	11.75	0.87	8	1.14	0.51
10	15.98	12.75	12.00	10.75	10.90	10.94	10.01	4.00	1.93	1.20	14.25	1.00	12		0.51
12	19.02	15.00	14.37	12.75	12.89	12.93	12.00	4.50	2.20	1.26	17.00	1.00	12		0.51

## ANSI 300LB

UNIT : NCH

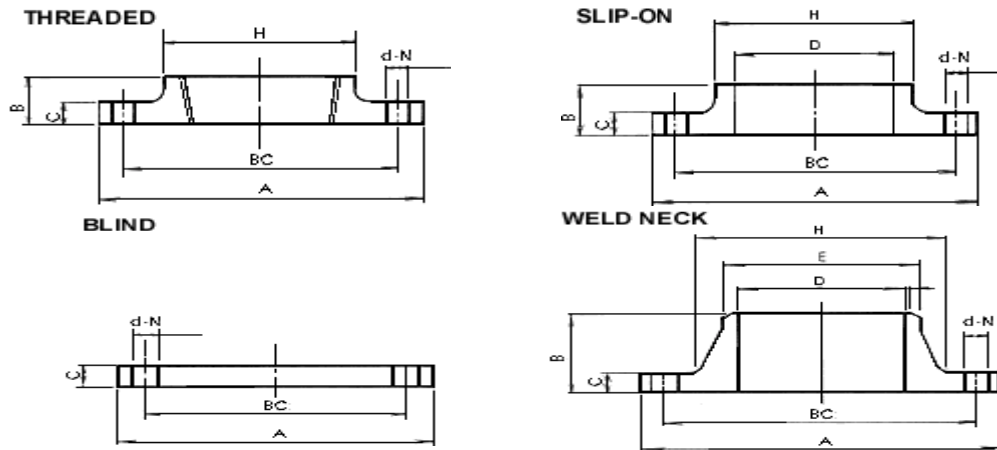
Size	O	S	X	A	B			Q	Y		C	G	T	BC	d	N	r
					Socket W elding Slip-On W elding	Lap Joint	W elding Neck		W elding Neck	(Except) W elding Neck							
1/2	3.74	1.38	1.50	0.84	0.89	0.92	0.62	0.93	2.06	0.87	0.57	0.06	0.63	2.63	0.62	4	0.12
3/4	4.61	1.69	1.87	1.05	1.11	1.13	0.82	1.14	2.25	0.98	0.63	0.06	0.63	3.25	0.75	4	0.12
1	4.88	2.00	2.12	1.32	1.38	1.39	1.05	1.42	2.44	1.06	0.69	0.06	0.69	3.50	0.75	4	0.12
1-1/4	5.24	2.50	2.50	1.66	1.72	1.74	1.38	1.75	2.56	1.06	0.77	0.06	0.81	3.87	0.75	4	0.20
1-1/2	6.14	2.87	2.75	1.90	1.97	1.98	1.61	1.99	2.69	1.18	0.83	0.06	0.87	4.50	0.87	4	0.24
2	6.50	3.63	3.31	2.38	2.46	2.48	2.07	2.50	2.75	1.30	0.89	0.06	1.13	5.00	0.75	8	0.31
2-1/2	7.52	4.13	3.94	2.87	2.96	2.98	2.47	2.99	3.00	1.50	1.00	0.06	1.25	5.87	0.87	8	0.31
3	8.27	5.00	4.63	3.50	3.57	3.61	3.07	3.62	3.13	1.69	1.14	0.06	1.25	6.63	0.87	8	0.39
3-1/2	9.02	5.50	5.25	4.00	4.08	4.11	3.55	4.13	3.19	1.73	1.20	0.06	1.44	7.24	0.87	8	0.39
4	10.00	6.19	5.75	4.50	4.59	4.61	4.03	4.65	3.37	1.90	1.26	0.06	1.44	7.87	0.87	8	0.43
5	10.98	7.31	7.00	5.56	5.68	5.70	5.05	5.71	3.87	2.01	1.38	0.06	1.69	9.25	0.87	8	0.43
6	12.52	8.50	8.12	6.63	6.74	6.76	6.07	6.73	3.87	2.05	1.46	0.06	1.81	10.63	0.87	12	0.51
8	15.00	10.63	10.25	8.63	8.74	8.76	7.98	8.74	4.37	2.44	1.63	0.06	2.00	13.00	1.00	12	0.51
10	17.52	12.75	12.63	10.75	10.90	10.94	10.02	10.87	4.63	2.64	1.89	0.06	2.19	15.25	1.12	16	0.51
12	20.47	15.00	14.75	12.95	12.89	12.93	12.00	12.95	5.13	2.87	2.01	0.06	2.38	17.75	1.25	16	0.51

The dimension for other ANSI classes, sizes are available upon request.

## MSS 150LB FLANGE

\*U.S. Standard\*Dimension conform to MSS SP-51. Material conform to ASTM A351 CF8 & CF8M.

Threads conform to ANSI B2.1 NPT thread. \*G grades : 304 and 316. We also supply 304L, 316L, upon request.



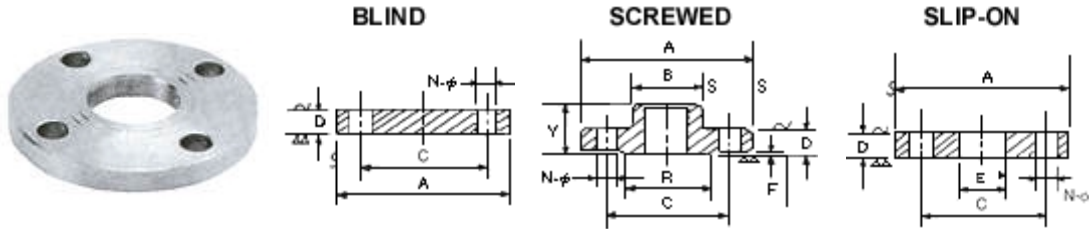
Unit : inch

SIZE	A	B		C	H	E	D		BC	d	N
		THREADED Slip-On	W eld Neck				Slip-On	W eld Neck			
1/2	3.50	0.62	1.87	0.33	1.19	0.84	0.89	0.62	2.38	0.62	4
3/4	3.86	0.62	2.06	0.36	1.50	1.05	1.11	0.82	2.75	0.62	4
1	4.25	0.69	2.19	0.39	1.94	1.32	1.38	1.05	3.12	0.62	4
1-1/4	4.61	0.81	2.25	0.42	2.31	1.66	1.72	1.38	3.50	0.62	4
1-1/2	5.00	0.87	2.44	0.45	2.56	1.90	1.97	1.61	3.87	0.62	4
2	5.98	1.00	2.50	0.52	3.06	2.38	2.46	2.07	4.75	0.75	4
2-1/2	7.01	1.12	2.75	0.58	3.56	2.87	2.96	2.47	5.50	0.75	4
3	7.50	1.19	2.75	0.64	4.25	3.50	3.59	3.07	6.00	0.75	4
4	9.02	1.31	3.00	0.70	5.31	4.50	4.59	4.03	7.50	0.75	8
5	10.00	1.44	3.50	0.77	6.44	5.56	5.68	5.05	8.50	0.87	8
6	10.98	1.56	3.50	0.83	7.56	6.63	6.74	6.07	9.50	0.87	8
8	13.50	1.75	4.00	0.95	9.69	8.63	8.74	7.98	11.75	0.87	8
10	15.98	1.94	4.00	1.02	12.00	10.75	10.90	10.02	14.25	1.00	12
12	19.02	2.19	4.50	1.06	14.37	12.75	12.89	12.00	17.00	1.00	12

# JIS 5K /10K Flanges

## JIS 5K & 10K STAINLESS STEEL CAST Flange

JIS STANDARD ,MATERIAL :SUS 304 & 316  
 MADE BY SAND CASTING OR FORGED  
 THREAD CONFORM TO BS21,1973 TAPER THREAD .



Unit :mm

DM \ N P S .		15	20	25	32	40	50	65	80	100	125	150	200	250
A +1.0 -0	5K	80	85	95	115	120	130	155	180	200	235	265	320	385
	10K	95	100	125	135	140	155	175	185	210	250	280	330	400
B +1.5 -0	5K	30	36	45	54	60	76	94	108	134	164	196	244	288
	10K	30	36	45	54	60	76	94	108	134	164	196	244	288
C ±0.5	5K	60	65	75	90	95	105	130	145	165	200	230	280	345
	10K	70	75	90	100	105	120	140	150	175	210	240	290	355
D +2.0 -0	5K	9	10	10	12	12	14	14	14	16	16	18	20	22
	10K	12	14	14	16	16	16	18	18	18	20	22	22	24
E +1.0 -0	5K	22.2	27.7	34.5	43.2	49.1	61.1	77.1	90	115.4	141.2	166.6	218	269.5
	10K	22.2	27.7	34.5	43.2	49.1	61.1	77.1	90	115.4	141.2	166.6	218	269.5
F ±0.2	5K	1	1	1	2	2	2	2	2	2	2	2	2	2
	10K	1	1	1	2	2	2	2	2	2	2	2	2	2
R ±1.0	5K	48	52	62	72	78	88	112	125	145	180	210	255	320
	10K	52	58	70	80	85	100	120	130	155	185	215	265	325
N	5K	4	4	4	4	4	4	4	4	8	8	8	12	12
	10K	4	4	4	4	4	4	4	8	8	8	8	12	12
N-φ +0.5 -0	5K	12	12	12	15	15	15	15	19	19	19	19	23	23
	10K	15	15	19	19	19	19	19	19	19	23	23	23	23
Y ±1.5	5K	16	18	18	21	21	22	26	30	35	35	38	40	44
	10K	16	18	18	21	21	22	26	30	35	35	38	40	44

OrderFax. (403)277-6790 (Canada), (630)578-0598 (USA)

Email: [order@valvedepot.com](mailto:order@valvedepot.com)

Copyright © by OEMIC 2001